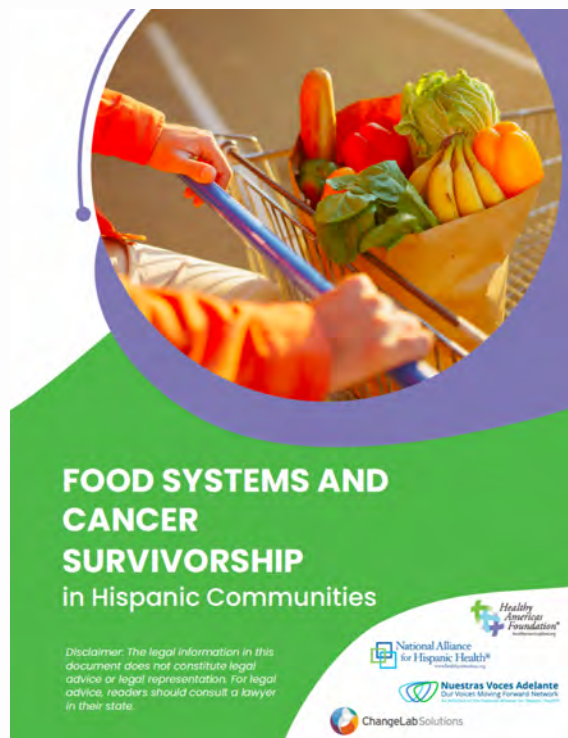




Nuestras Voces Adelante
Our Voices Moving Forward Network
An Initiative of the National Alliance for Hispanic Health®

NEWS UPDATE JUNE 2024

New Bilingual Report: Food Systems and Cancer Survivorship in Hispanic Communities



Hot Off the Press

The National Alliance for Hispanic Health (the Alliance) released a new comprehensive resource on the critical connection between food systems and cancer survivorship. The Food Systems and Cancer Survivorship in Hispanic Communities report and infographic are available in English and Spanish and offer critical insights and actionable information to support Hispanic cancer survivors. This resource was developed by Nuestras Voces Network Program, an initiative of the Alliance, and the Healthy America Foundation® in collaboration with ChangeLab Solutions.

The data and recommendations in these documents highlight the urgent need for coordinated efforts at all levels – local, state, and national – to address the dietary needs of Hispanic cancer survivors. For more information about the *Nuestras Voces Adelante* Network Program visit: www.nuestrasvoces.org

Addressing Tobacco Use Among Agricultural Workers



New Guide!

The National Center for Farm Worker Health recently released the [Guide for Health Centers to Address Tobacco Use Among Agricultural Workers](#).

Migratory and Seasonal Agricultural Workers (MSAWs) are more susceptible to tobacco use because of the nature of their work, constant mobility, and certain cultural traditions. Community health centers play an important role in helping MSAW individuals quit or reduce tobacco use by screening and implementing culturally and linguistically-appropriate tobacco cessation interventions. This guide provides information for health center staff about the various methods of tobacco consumption, related health risks, and benefits of quitting specifically tailored to agricultural workers. It also includes cessation and tobacco use screening tools and strategies to motivate change, identify a person's level of readiness to quit, conduct outreach, and build collaborative partnerships to address tobacco use. The guide is accompanied by a bilingual educational door hanger titled **How Using Tobacco Can Affect You and Your Family** to support community-level outreach and education efforts.

Cancer Facts & Figures 2023-2024



Cancer Data!

In 2023, 45% of the 609,820 cancer deaths in the United States are estimated to be attributable to cancer risk factors that are all potentially modifiable such as cigarette smoking, excess body weight, alcohol intake, physical inactivity, and unhealthy diet. The American Cancer Society's recently released publications, [Cancer Prevention and Early Detection Facts & Figures, 2023-2024](#) and [Cancer Prevention and Early Detection 2024 Tables & Figures Only](#) include—for the first time—state-level lung cancer screening prevalence estimates as well as other major state-level risk factors and current screening data.

Bilingual Toolkit on Vaping & E-Cigarettes



Bilingual Toolkit!

To address the continued problem of E-cigarette use among youth, the Food and Drug Administration's Center for Tobacco Products developed a bilingual toolkit addressing e-cigarettes and vaping for professionals working with young people. [The Vaping & E-Cigarettes Toolkit](#) provides stakeholders with a series of fact sheets containing helpful information to educate their communities about how e-cigarettes affect youth.

¡Herramienta bilingüe!

Para abordar el problema del uso de cigarrillos electrónicos entre los jóvenes, el Centro para Productos de Tabaco de la Administración de Alimentos y Medicamentos (FDA por sus siglas en inglés), desarrolló un herramienta bilingüe sobre el vapeo y los cigarrillos electrónicos para profesionales que trabajan con jóvenes. La herramienta [El vapeo y los cigarrillos electrónicos](#) brinda a las partes interesadas los datos que necesitan para ayudar a informar a sus comunidades sobre los cigarrillos electrónicos y sus efectos en los jóvenes.

Count Me In: A Patient-Partnered Cancer Research Study



Cancer Research Program!

[Count Me In](#) is a direct-to-patient research program developed by the Broad Institute of MIT and Harvard that aims to accelerate the pace of cancer research by collecting and analyzing comprehensive data from all patients with cancer residing in the United States and Canada. The program is a collaborative effort between patients, caregivers, researchers, and clinicians, and representation from the Hispanic/Latino community will be crucial to ensure the research reflects the diversity of all cancer patients. Count Me In data are regularly shared with the biomedical research community through scientific repositories such as cBioPortal for Cancer Genomics and the National Cancer Institute (NCI) Genomic Data Commons.

For more information, visit JoinCountMeIn.org

Expanding Language Access in Federally Supported Programs: Practical Solutions for Persistent Problems

Policy Brief!

The Migration Policy Institute's newly released policy brief, [Expanding Language Access in Federally Supported Programs Practical Solutions for Persistent Problems](#), explores the challenges to advancing language access in federally supported programs, including translation and interpreting, for speakers of languages other than English. These programs most importantly include state, county and local health and human services, as well as other important public information. The brief also examines potential next-generation solutions and strategies to address these challenges. Despite longstanding civil-rights requirements that all federally funded recipients and sub-recipients (i.e., sub-grantees) provide language access in their programs, language barriers persist for many of the more than 25 million U.S. residents with limited English proficiency.



Copyright © 2024 National Alliance for Hispanic Health, All rights reserved.

Our mailing address is:
National Alliance for Hispanic Health
1501 16th Street NW
Washington, DC 20036

Want to change how you receive these emails?
You can [update your preferences](#) or [unsubscribe from this list](#)